

1145 Tom Ginnever Avenue
 O'Fallon, Missouri 63366
 P 636-978-1680 F 636-978-5024
 School Code: 263135 lwcs.us

Christian High School

A Living Word Christian School

Dave Meers, B.S.P.T. - Executive Director
Warren Aldrich, M.S. - Principal
James Drury, Ed.D. - Academic Dean
Patrick Turner, M.A. - District Pastor
Scott Thornhill, M.A.C., P.L.P.C. - School Counselor

The mission of Living Word Christian School is to assist Christian families in equipping students with a Christ-centered education, empowering them to impact the world for the glory of God.

Grading Scale

| | |
|---|----------|
| A++(Honors, AP, Dual Credit) 5 pts. | 100-110 |
| A - 4 pts. | 90-99 |
| B - 3 pts. | 80-89 |
| C - 2 pts. | 70-79 |
| D - 1 pt. | 60-69 |
| F - 0 pts. | Below 60 |
| CHS does not rank except for Valedictorian and Salutatorian. | |

School and Community

In 1980, a group of families in St. Charles County saw a need for a Christian school that would serve the educational and spiritual needs of their children. With this in mind, they committed themselves to starting Living Word, beginning with an elementary school. In 2015, the preschool and elementary moved to it's current location.

Accreditations

ACSI and AdvancED
 Designated A+ high school

Associations & Memberships

MSHSAA, AAA Conference,
 NACAC, MOACAC, NACCAP, MSCA

2018 ACT Average - 24.2
Alpha Omega ACT avg. - 26.2
Top 25% ACT Average - 29.8

2018 Bright Flight Scholars - 7

2018 National Merit Scholars - 1 Commended

2018 graduates offered \$8.5 million in scholarships
 (includes 14 A+ scholarships)

4 year college - 78%
2 year college - 12%
Technical college - 2%
Military or Ministry - 4%
Employment - 4%

Graduation Requirements

| Subject | Credits Required |
|--------------------|------------------|
| Bible | 4 |
| English | 4 |
| Math | 3 |
| Science | 3 |
| Social Studies | 3 |
| Computer | .5 |
| Speech | .5 |
| Personal Finance | .5 |
| Fine Art | 1 |
| Physical Education | 1 |
| Health | .5 |
| Electives | 5 |

Total Credits 26

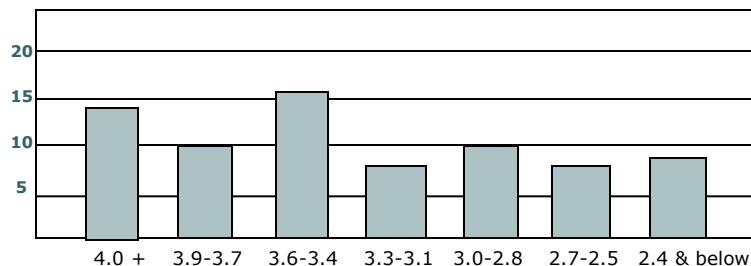
(Two years of the same foreign language are highly recommended.)

Community Service Hours:130

Students are responsible for serving each year they are enrolled at CHS.

Community service hours completed by class of 2018 graduates: 23,000

GPA Profile for Class of 2019 (6 semesters/class size 84)



Curriculum

English

English I & II Honors
English I, II, III, IV
ESL I & II
AP Eng. Lit. and Composition
AP Language and Composition
Speech
Playwriting
Creative Writing
Journalism

Math

Algebra I - H, Algebra I
Geometry - H, Geometry
Algebra II - H, Algebra II
DC Pre-Calculus (MBU)
AP Calculus AB
Intermediate Algebra
DC College Algebra (MBU)

Science

Physical Science
Biology
Principles of Biomedical Science
Chemistry
Honors Chemistry
AP Chemistry
Anatomy & Physiology
Zoology
AP Physics

Social Studies

Constitutional Studies
World History
U.S. History
AP U.S. History
Civics
Psychology
Psychology DC (MBU)

Foreign Language

Spanish I
Spanish II,
Spanish III - Honors
Spanish IV - Honors
Latin I - Honors
Latin II - Honors

Fine Arts

Intro. to Art I & II
Independent Study Art
Concert Choir
Voces Vitae Acapella
Intro. to Musical Theatre
Symphonic/Marching Band
Jazz Band
Color Guard
Orchestra
High School Drama
Acting I, II, III
Directing

Physical Education

Weight Training
Health
Bible
Bible Literature - 9th/10th
World Religions - 11th
World Religions - 12th
Practical Arts
Beg. Programming
Child Development
Digital Print Design
Food Preparation I, II, III
Sewing I, II, & Boys Sewing
Intro. to Technical Theatre
Interior Design
Yearbook
Computer Applications
Introduction to Business I & II
Marketing
Personal Finance
Introduction to Accounting
Wisdom for Life after High School
Academic Learning Lab - for students with learning and/or medical challenges

The CHS staff and faculty consists of **40** degreed professionals, **50%** of which have advanced degrees.
Faculty/Student Ratio: **10 to 1** Average class size: **22**

Clubs and Activities

| | |
|-----------------------|-------------------------|
| Art Club | Pep Club |
| Chapel Drama Team-KIP | Robotics |
| Chess Club | Sewing Club |
| Eagle Ambassadors | Student Government |
| FCA | Swing Dance |
| Math Club | Theatre and Speech Team |
| Mission Trips | Worship Team |
| NHS | WYSE & Scholar Bowl |

Sports

| | |
|-----------------------|--------------------------|
| Football - JV & V | Basketball B - Fr, JV, V |
| Softball | Basketball G - JV, V |
| Volleyball G - JV & V | Cheer |
| Cross Country B & G | Dance |
| Soccer B & G | Wrestling - JV, V |
| Swimming B & G | Baseball - JV, V |
| Golf B & G | Volleyball B - JV, V |
| | Track B & G - JV, V |

The CHS graduating class of 2018 accepted scholarships from the following schools:

Austin Peay State University, Baylor University, Belmont University, Benedictine University, Bradley University, Calvin College, Central Methodist University, Coe College, Columbia College, Cornell College, Culver Stockton College, Dordt College, Drury University, Evangel University, Florida State University, Greenville University, Hannibal La-Grange University, Lindenwood University, Lipscomb University, Maryville University, Missouri Baptist University, Missouri State University, Missouri University of Science and Technology, North Park University, Oklahoma Baptist University, Oklahoma Christian University, Oral Roberts University, Palm Beach Atlantic University, Purdue University, Quincy University, Rice University, Rockhurst University, Rutgers University, Saint Louis University, Southeast Missouri State University, Southern Illinois University - Carbondale, Southwest Baptist University, St. Charles Community College, Trinity International University, Truman State University, University of Central Missouri, University of Missouri - Columbia, Washington University, Webster University, Westminster College, William Woods University, Wisconsin Lutheran College