

www.lwcs.us

1145 Tom Ginnever Avenue  
O'Fallon, Missouri 63366

# Christian High School

*A Living Word Christian School*

**Keith Currivean, M.A., M.A.T.S. - Superintendent**  
**Ronald Ring, M.Ed. - Principal**  
**Patrick Turner, M.A. - Campus Pastor**  
**Terri Frank, M.Ed., L.P.C. - School Counselor**  
**Nancy Benes, M.A. - Advancement Director**  
**Andy Hare, M.B.A. - Athletic Director**  
**Janet Huskey - Admissions Director**

**School Code:**  
**263135**  
 (636) 978-1680  
 (636) 978-5024 Fax

**The mission** of Living Word Christian School is to assist Christian families in equipping students with a Christ-centered education, empowering them to impact the world for the glory of God.

### School and Community

In 1980, a group of families in St. Charles County saw a need for a Christian school that would serve the educational and spiritual needs of their children. With this in mind they committed themselves to starting Living Word, beginning with an elementary school. In 1998 Christian High School graduated its first class. CHS now serves about 350 students from St. Charles, St. Louis, and Lincoln counties, and represents over 100 different churches.

### Grading Scale

A++(Honors, AP, Dual Credit) 5 pts.	100-110
A - 4 pts.	90-99
B - 3 pts.	80-89
C - 2 pts.	70-79
D - 1 pt.	60-69
F - 0 pts.	Below 60

**CHS does not rank except for Valedictorian and Salutatorian.**

### Accreditations

ACSI and AdvanCED

### Associations

MSHSAA, AAA conference

### Student Body

9th - 82

10th - 85

11th - 91

12th - 87

**Since 2011, ACT Avg. 24.9,**

**Top 25% ACT Avg. 28.9,**

**2016 Bright Flight Scholars 4**

### National Merit History

3 Finalists, 2 Semi-finalists,

Several commended

### National Achievement-1

Scholarships offered to class of

2016 graduates - **\$6.6 million**

College attendance avg. for CHS

graduates - **98%**

## Graduation Requirements

### Subject

### Credits Required

Bible	4
English	4
Math	3
Science	3
Social Studies	3
Computer	.5
Speech	.5
Personal Finance	.5
Fine Art	1
Physical Education	1
Health	.5
Electives	5

**Total Credits 26**

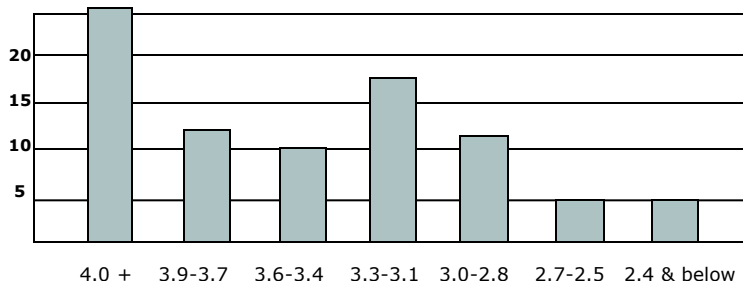
(Two years of the same foreign language are highly recommended.)

### Community Service Hours:130

Students are responsible for serving each year they are enrolled at CHS.

Community service hours completed by class of 2015 graduates: **16,200**

**GPA Profile for Class of 2016 (6 semesters/class size 87)**



## Curriculum

### English

English I & II Honors  
 English I, II, III, IV  
 ESL I & II  
 AP English Lit. and Composition  
 AP Language and Composition  
 Speech, Playwriting

### Math

Algebra I-Honors, Algebra I  
 Geometry-Honors, Geometry  
 Algebra II-Honors, Algebra II  
 Pre-Calculus-Honors  
 AP Calculus AB  
 Intro. to College Algebra  
 DC College Algebra (MBU)

### Science

Physical Science  
 Biology  
 Principles of Biomedical Science  
 Anatomy & Physiology  
 Zoology  
 AP Chemistry  
 Honors Chemistry  
 Chemistry  
 Physics

### Social Studies

Constitutional Studies  
 World History  
 U.S. History  
 AP U.S. History  
 Civics

Psychology

### Foreign Language

Spanish I  
 Spanish II, Spanish III-Honors  
 Spanish IV-Honors  
 Latin I-Honors, Latin II

### Fine Arts

Introduction to Art I & II  
 Independent Study Art  
 Concert Choir  
 Chamber Choir  
 Intro. to Musical Theatre  
 Symphonic/Marching Band  
 Jazz Band  
 Color Guard  
 Orchestra  
 High School Drama  
 Acting I, II, III  
 Directing

### Physical Education

Weight Training  
 Health

### Bible

9th/10th Bible Literature  
 11th/12th World Religions

### Practical Arts

Beg. Programming  
 Child Development  
 Digital Print Design  
 Food Preparation I, II, III  
 Sewing I, II, & Boys Sewing  
 Intro. to Tech. Theatre  
 Interior Design  
 Yearbook  
 Microsoft Applications  
 Introduction to Business I & II  
 Marketing  
 Personal Finance  
 Introduction to Accounting  
 Wisdom for Life after High School  
**CEED (Christ-Centered Excellence in Education)** for students with learning and/or medical challenges

The CHS staff and faculty consists of **40** degreed professionals, **46%** of which have advanced degrees and **another 17%** are pursuing an advanced degree.

Faculty/Student Ratio: **10 to 1** Average class size: **22**

## Clubs and Activities

Art Club	Pep Club
Chapel Drama Team-KIP	Robotics
Chess Club	Sewing Club
Eagle Ambassadors	Student Government
FCA	Swing Dance
Math Club	Theatre and Speech Team
Mission Trips	Worship Team
NHS	WYSE & Scholar Bowl

## Sports

Football-JV & V	Basketball B-Fr, JV, V
Softball	Basketball G-JV, V
Volleyball G-JV & V	Cheer
Cross Country B & G	Dance
Soccer B & G	Wrestling-JV, V
Swimming B & G	Baseball-JV, V
Golf B & G	Volleyball B-JV, V
	Track B & G-JV, V

### The CHS graduating class of 2016 accepted scholarships from the following:

Asbury, Buena Vista, Cedarville, College of the Ozarks, Drake, Evangel, Full Sail, Greenville, Lindenwood, Loyola University Chicago, Maryville, McKendree, Missouri Baptist, Missouri State, Mo. University of Science & Technology, Murray State, Olivet Nazarene, Oral Roberts, Palm Beach Atlantic, Quincy, St. Louis College of Pharmacy, Samford, Seattle Pacific, Southeast Missouri State, SIU-Carbondale, SIU-Edwardsville, Southwest Baptist, Stanford University, Taylor, Truman State, University of Washington, University of Missouri-Columbia, UMKC, UMSL, and Westminster College