



www.lwcs.us

1614 Willott Road
St. Peters, Missouri 63376

Christian Elementary & Preschool

A Living Word Christian School

Keith Currivean, M.A., M.A.T.S. - Superintendent
James Drury, M.Ed., - Principal
Allison Bearden, M.A., - Assistant Principal
Nancy Benes, M.S. - Advancement Director
Janet R. Huskey - Admissions Director

Main: (636) 978-1680
 Fax: (636) 329-3033
 Website: www.lwcs.us

The mission of Living Word Christian School is to assist Christian families in equipping students with a Christ-centered education, empowering them to impact the world for the glory of God.

School and Community

In 1980, a group of families in St. Charles County saw a need for a Christian school that would serve the educational and spiritual needs of their children. With this in mind they committed themselves to starting Living Word, beginning with an elementary school. In 2015, the preschool and elementary moved to it's current location.

Accreditation -

ACSI
 AdvancED

Average Class Size-

Preschool - 10
 Elementary - 16

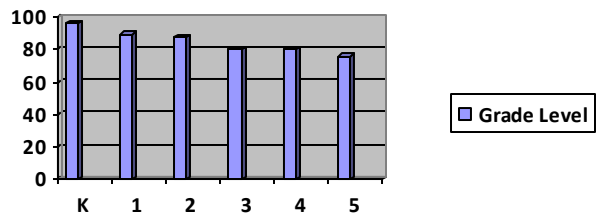
Student Body -

PreK3 15
 PreK4 35
 K5 30
 1st 23
 2nd 33
 3rd 40
 4th 35
 5th 35

Grading Scale

A	90-100
B	80-89
C	70-79
D	60-69
F	Below 60

Standardized Testing Profile



The Testing Profile is based on spring data from the TerraNova3 achievement tests.

Special Classes

Art
 Music
 Computer
 P.E.
 Library
 Latin
 Band - Grade 5
 Performing Arts - Grade 5

Enrollment Options

Preschool - Full Day
 Preschool - Part time (Seat Share Program*)
 Extended Day (PreK-5) - 6:30am-6:00pm
 Summer Camp (PreK -5) - 10 Weeks
 Extended Care (Before and after school)

*The Seat Share Program allows for a part-time enrollment of Monday - Wednesday - Friday or Tuesday - Thursday. This program is limited based on available spots.

Preschool Curriculum Objectives

- *Spiritual Awareness* - Your child will develop a relationship with a loving God. Students will learn to navigate and understand Scripture.
- *Social and Emotional Development* - Students will develop a sense of self and learn responsibility for their actions. The children will learn skills for pro-social behavior. Teamwork, collaboration, and negotiation is supported within the classroom. Respect and manners for peers and adults are promoted in all classes.
- *Physical* - Children will work to refine gross motor development for coordination and movement ability. Fine motor skills are practiced to promote writing and the manipulation of intricate materials.
- *Cognitive Development* - Students will develop logical and critical thinking along with problem solving skills. Children will learn to think using representation and symbolism.
- *Language Development* - Students will use and develop the skills of listening, speaking, and beginning to read and write. These are essential skills for interpersonal communication.

The CES/CPS faculty and staff consist of 32 degreed professionals, 30 % of which have advanced degrees.

Parent Volunteers

Parents have the opportunity to join an active Parent-Teacher Connection (PTC). Parents work with the principal to bless teachers and help organize, coordinate, and in some cases, implement activities to help enrich the students educational experience.

Programs

Resource Program - At LWCS our Christ Centered Excellence in Education (CEED) assists families with children with different learning needs. Working with parents and teachers, Student Education Plans are created to help the students be successful in the classroom. Small help groups and one-on-one teaching is also available through our CEED program.

Gifted Program - An after school gifted class, known as POW WOW, is available for students in grades 3 - 5.

Robotics - Students in grade 4 - grade 8 are able to compete on one of our FIRST Lego League (FLL) teams in the fall term. New teams are formed to include third grade students in the spring new teams.

ACSI Competitions

- Math Olympics
- Spelling Bee
- Science Fair
- Art Fair
- Speech Meet

Sports

- Boys Baseball
- Boys Basketball
- Boys Soccer
- Girls Basketball
- Girls Soccer
- Girls Softball
- Girls Cheer

*Teams vary based on parent
volunteers*